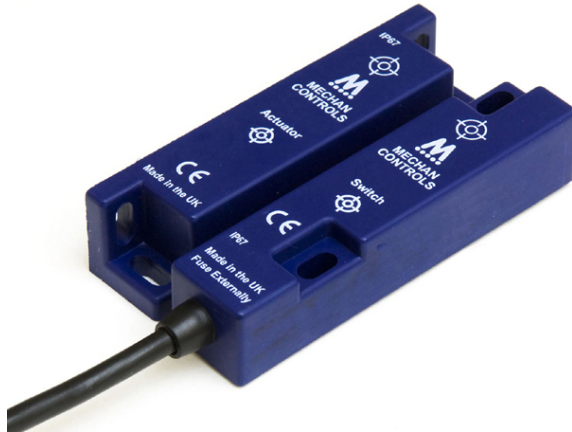




MECHAN CONTROLS PLC

SED Door Switch

- Tamper proof Electronic operation
- 1 x N/O
- 10mm Operating distance
- 12Vdc Operation
- Up to 500mA Switching
- IP67
- ABS Housing
- CE



DESCRIPTION

The Mechan SED switches are electronically operated, non-contact safety switches for use in door monitoring applications.

The SED is designed with an easy to install minimum 10mm switching distance, this also makes the switch tolerant to misalignment and door vibration. The SED is fully encapsulated to IP67 and is suitable for use in wet, wash-down or dusty areas.

With the solid state electronics fully encapsulated into a robust housing the SED will provide long operational life with minimal maintenance, even in the harshest of conditions.

The SED switch has 1 x N/O bi-directional output capable of switching 500mA at 24Vdc along with a LED giving the operator clear status indication.



Mechan Controls PLC.
14 Seddon Place, Stanley Industrial Estate, Skelmersdale
Lancashire WN8 8EB UK
Tel: +(0)1695 722264 Fax: +(0)1695 729664 Email: sales@mechancontrols.co.uk

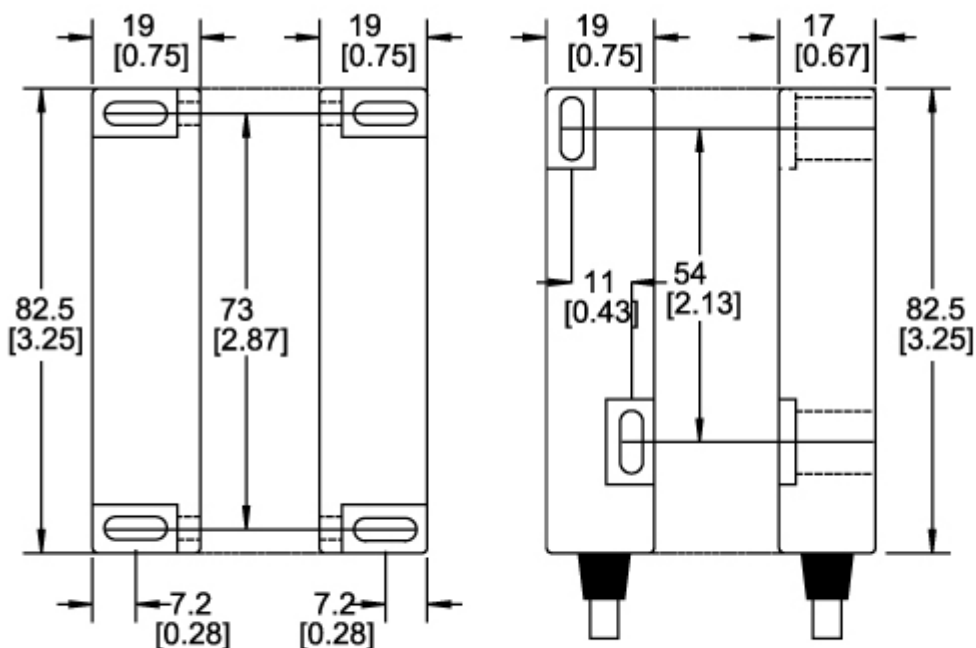
For the latest information

visit our web site at
www.mechancontrols.co.uk

TECHNICAL SPECIFICATION

Type	SEC Electronic Door Switch
Technology	Electronic
Supply	12vDC
Contact Arrangements	1 x N/O
Safety Contact Operating Distance	Minimum 10mm
Safety Contact Rating	DC: 24Vdc / 500mA
External Fuse (Customer Supplied)	DC : 0.250mA Fast Acting
Dimensions Switch	82.5 x 19 x 17mm
Dimensions Actuator	82.5 x 19 x 19mm
IP Rating	IP67
Cable length	3 metres pre-wired (can be extended)
Vibration / Shock	50—100Hz / 10g
Operating Temperature	-10 to +55C
Mounting & Fixture	Target to Target
Construction	Blue ABS Resin Filled
Approvals	CE;

DIMENSIONS

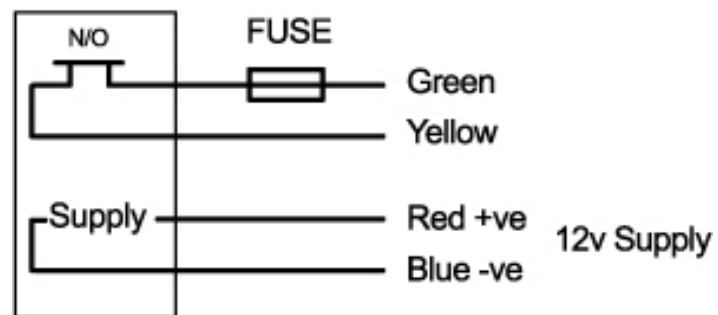


ACTUATOR

SWITCH

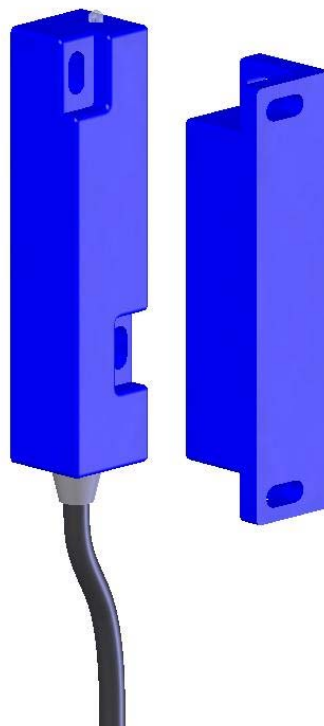
DIMENSIONS IN
MM [INCHES]

CONNECTIONS



NOTE : Contacts are shown when the actuator is not in place.

3 D CAD



Ordering information

[illegible]

Mechan Controls PLC.

14 Seddon Place, Stanley Industrial Estate,
Skelmersdale
Lancashire WN8 8EB UK
Tel: +(0)1695 722264
Fax: +(0)1695 729664
Email: sales@mechancontrols.co.uk
Web www.mechancontrols.co.uk

In the interest of product development, specifications are subject to change without notice.
It is the responsibility of the user to ensure compliance with any acts or bye-laws that may be in force.
All information regarding Mechan equipment is believed to be accurate at the time of printing. Responsibility cannot be accepted for errors or omissions.